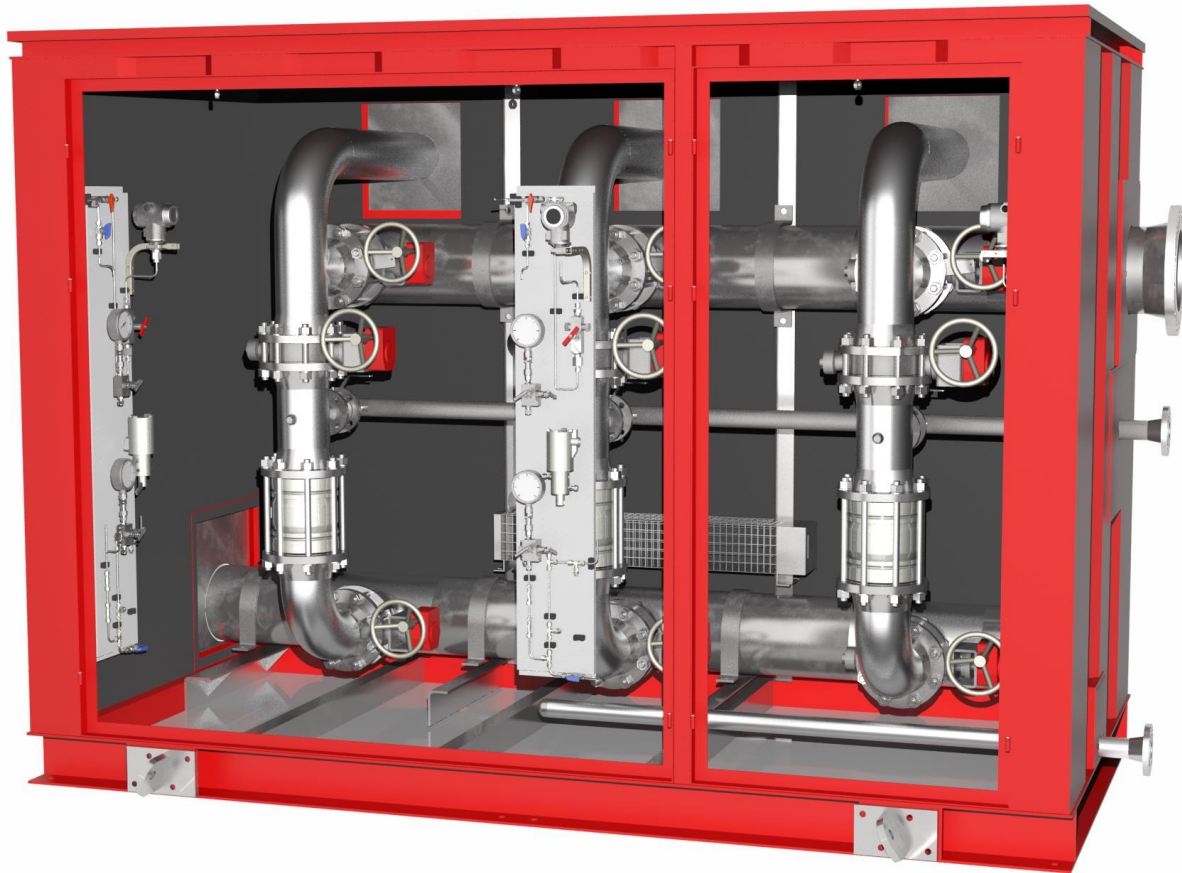


DELM-01, Multi valve deluge skid



PRODUCT DESCRIPTION:

DESIGN LAYOUT:

Multivalve Deluge water skid.

Two Firewater inlets
Internal manual bypass valves at each deluge valve
Reduced flow test/drain arrangement
Foam supply in main and by-pass mode

STANDARD MATERIALS:

Skid enclosure:	AISI 316L.
Water Piping/Valves:	Titanium
Foam Piping/Valves:	AISI 316

ALTERNATIVE MATERIALS:

Piping:	CuNi 90/10, Super Duplex
Valves:	Super Duplex, BS1400 AB2/LG2,

WORKING PRESSURE:

20 barg

FPE AS
PO Box 142
N-4065 Stavanger
Norway

Office Address :
Kanalarmen 12,
N-4033 Stavanger

E-mail: post@fpe.no

Telephone : 51 95 92 92
Faximile :51 95 92 91
Enterprise No: 981 990 374
QA Certificate no: 2001-OSL-AQ-7140

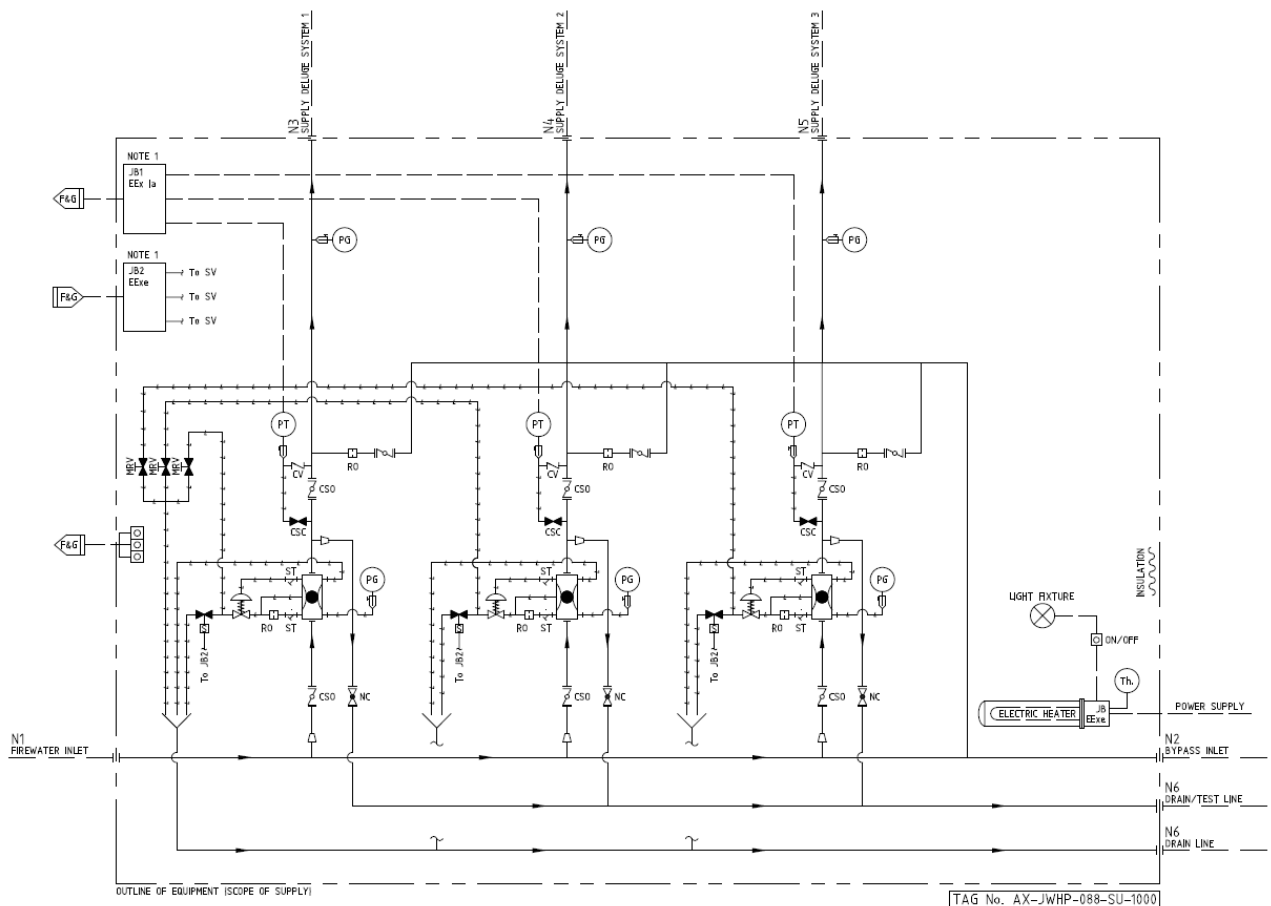


DELM-01, Multi valve deluge skid

COMMENTS:

The deluge valve skid can be made test drain header sized to take flow of all deluge valves involved in the largest fire scenario. The skid dimension will obviously vary with the number and dimension of deluge valves.

System logic drawing



FPE AS
PO Box 142
N-4065 Stavanger
Norway

Office Address :
Kanalarmen 12,
N-4033 Stavanger

E-mail: post@fpe.no

Telephone : 51 95 92 92
Faximile : 51 95 92 91
Enterprise No: 981 990 374
QA Certificate no: 2001-OSL-AQ-7140

